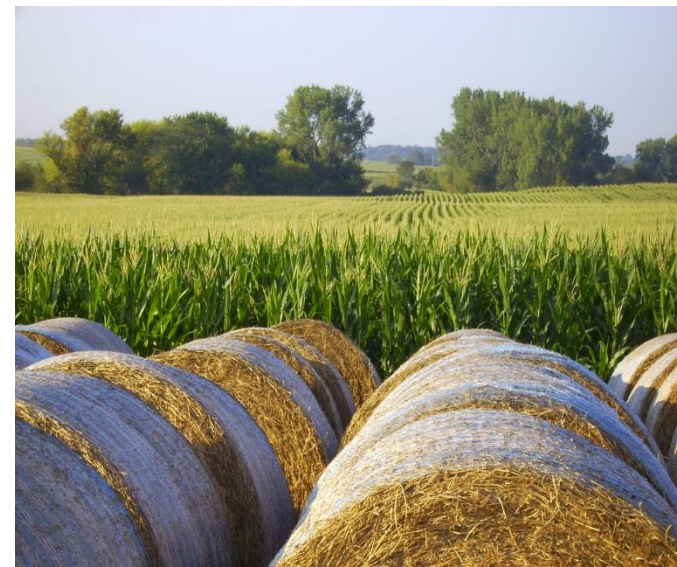




IPI FARMS

IPI Advisory Board Meeting
September 29, 2017



IPI Farms 2016 Financials

Revenue \$1,563,826.27

Expenses \$1,882,278.78

Net Income/(Loss) (\$163,749.48)

Contributing Factors:

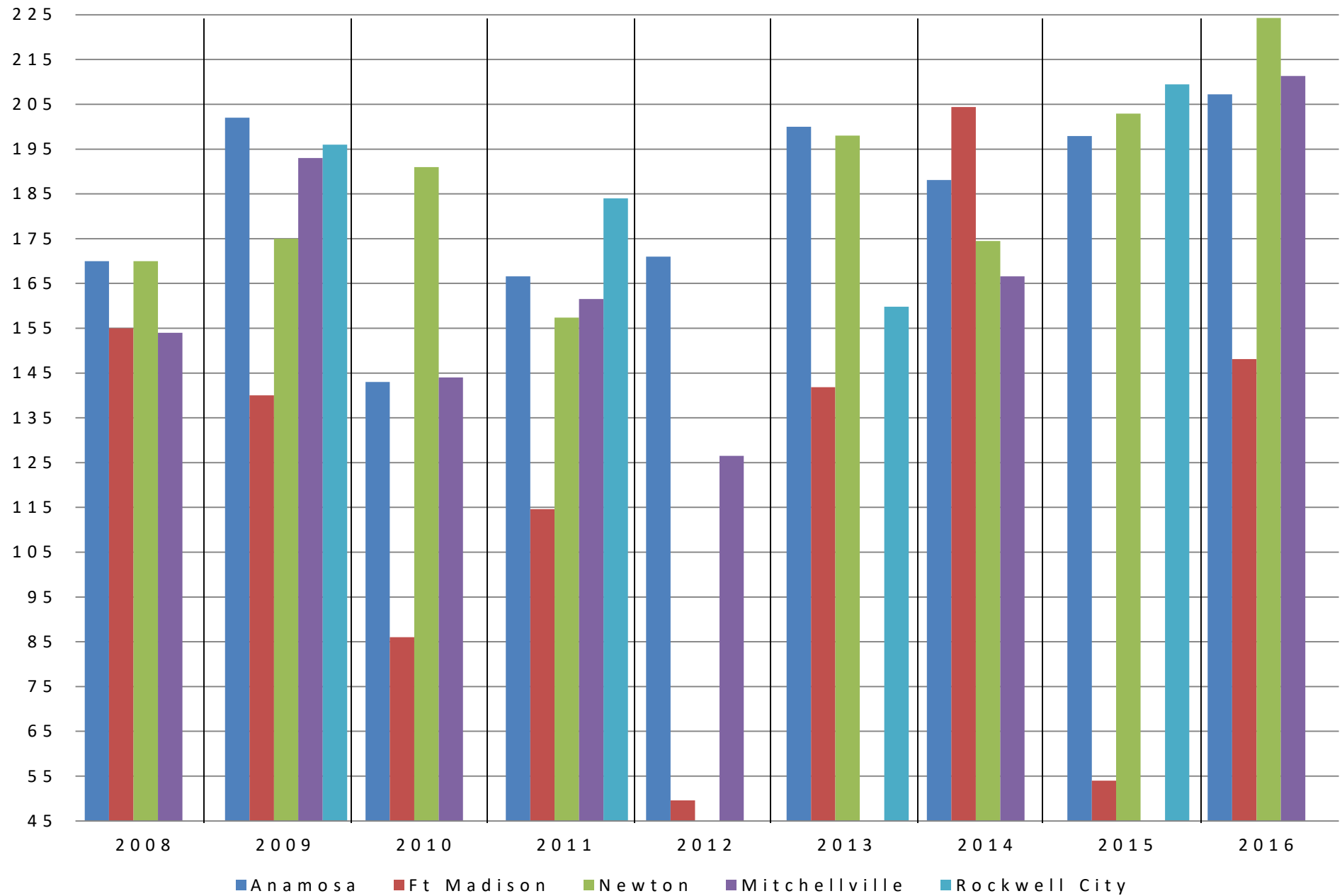
Cattle markets down - calf sales down \$138,000

Rebid leases, rents down - \$164,000

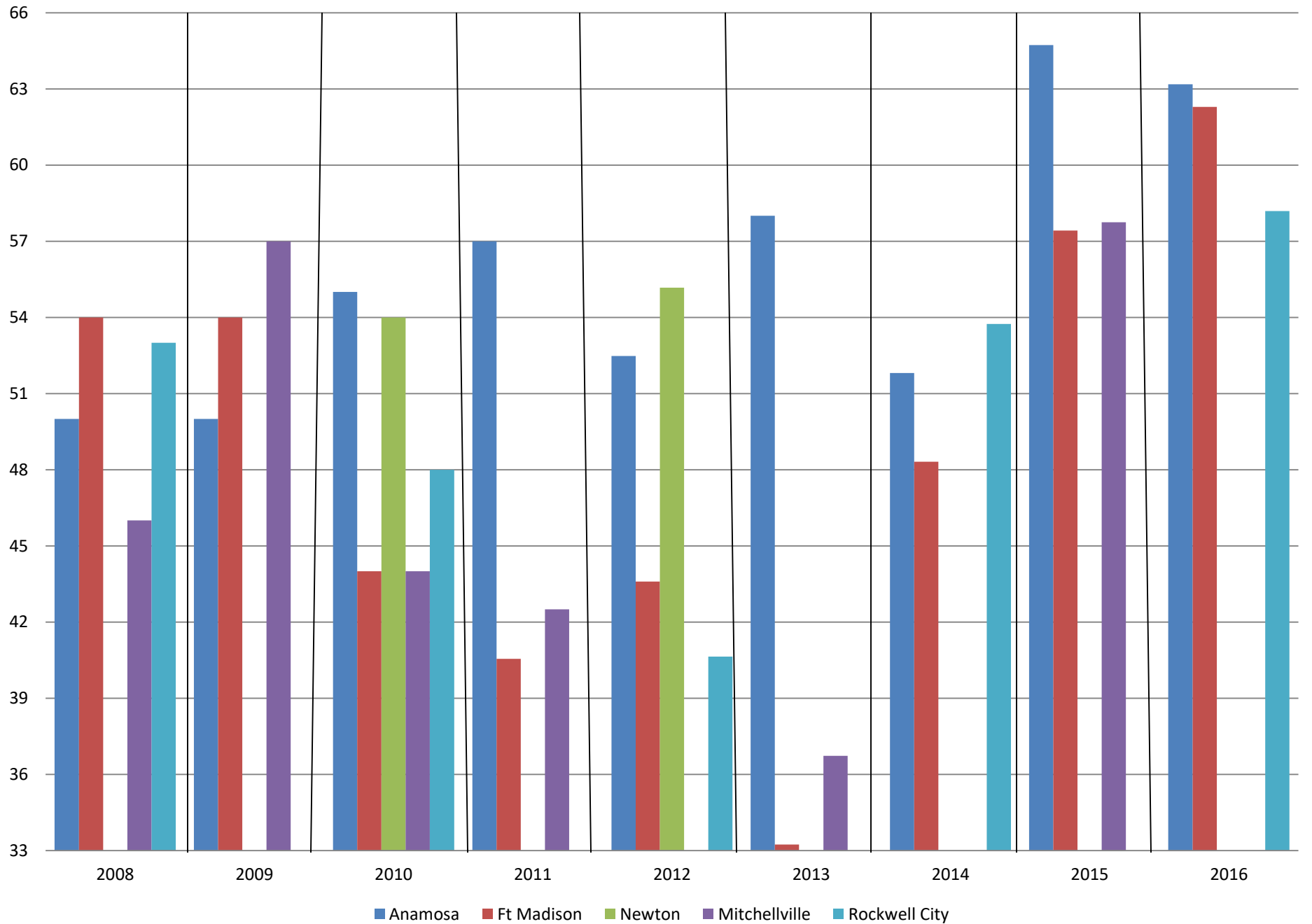
Declining crop prices

Questions

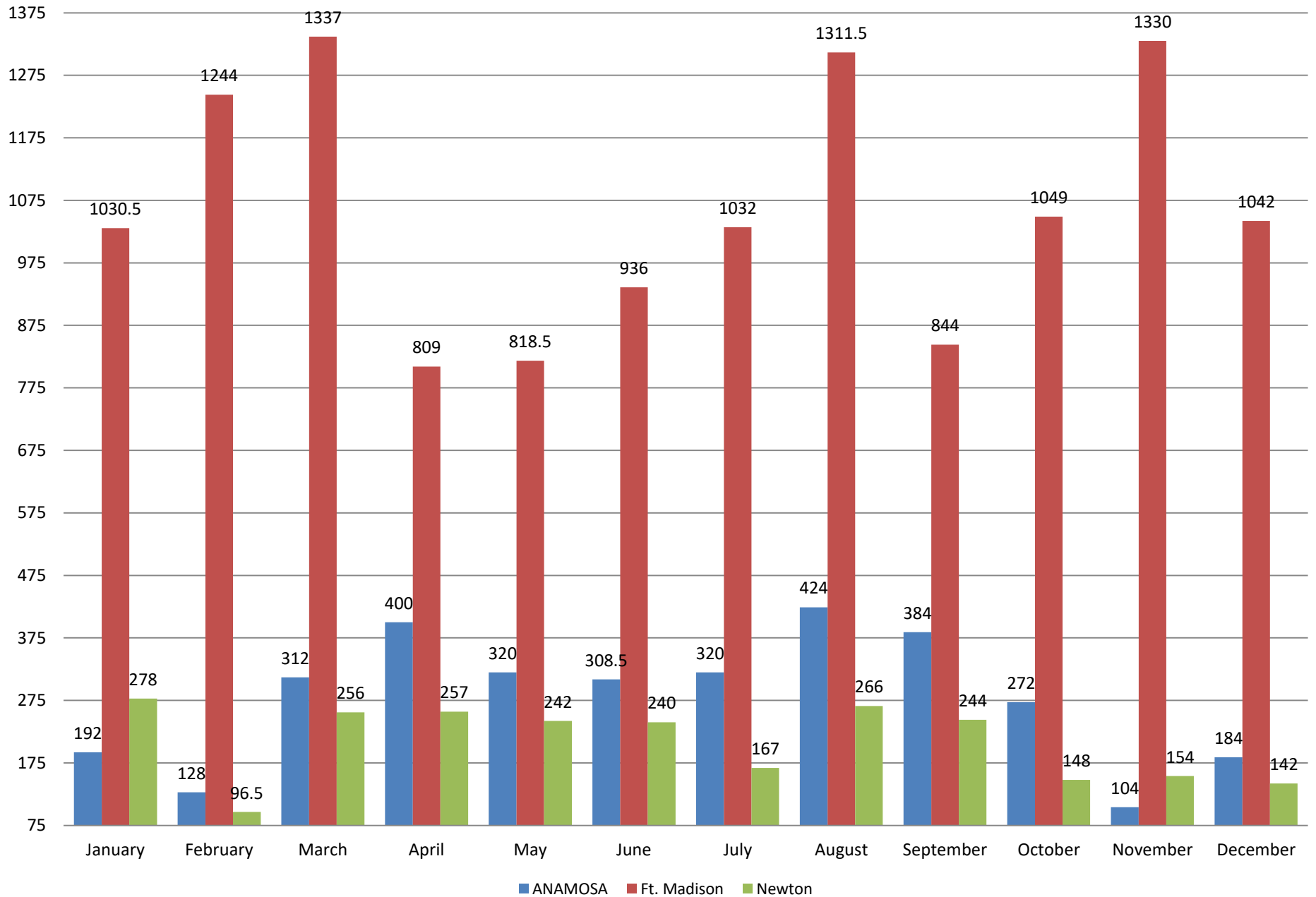
AVERAGE CORN YIELDS 2008- 2016



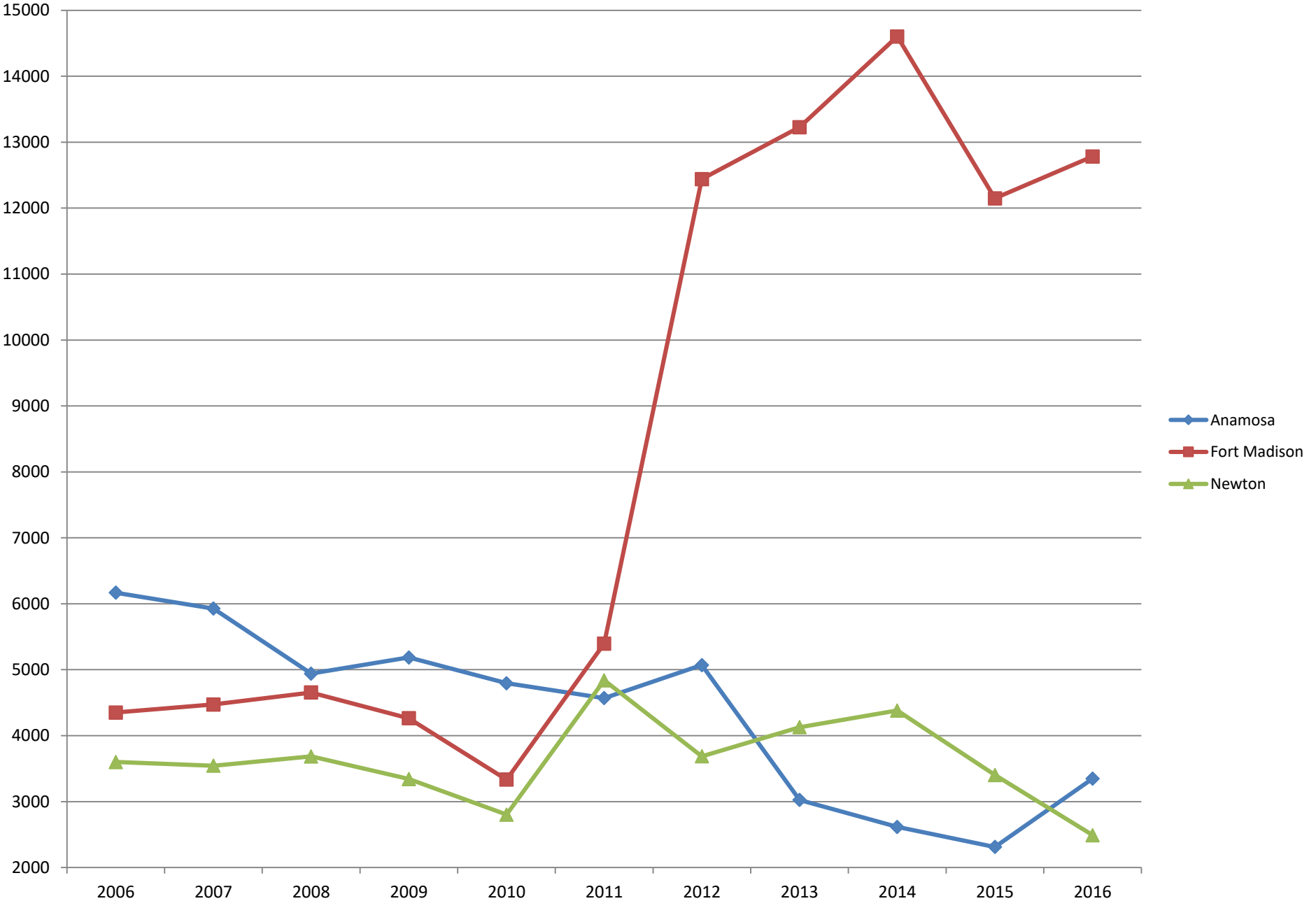
AVERAGE BEAN YIELDS 2008 - 2016



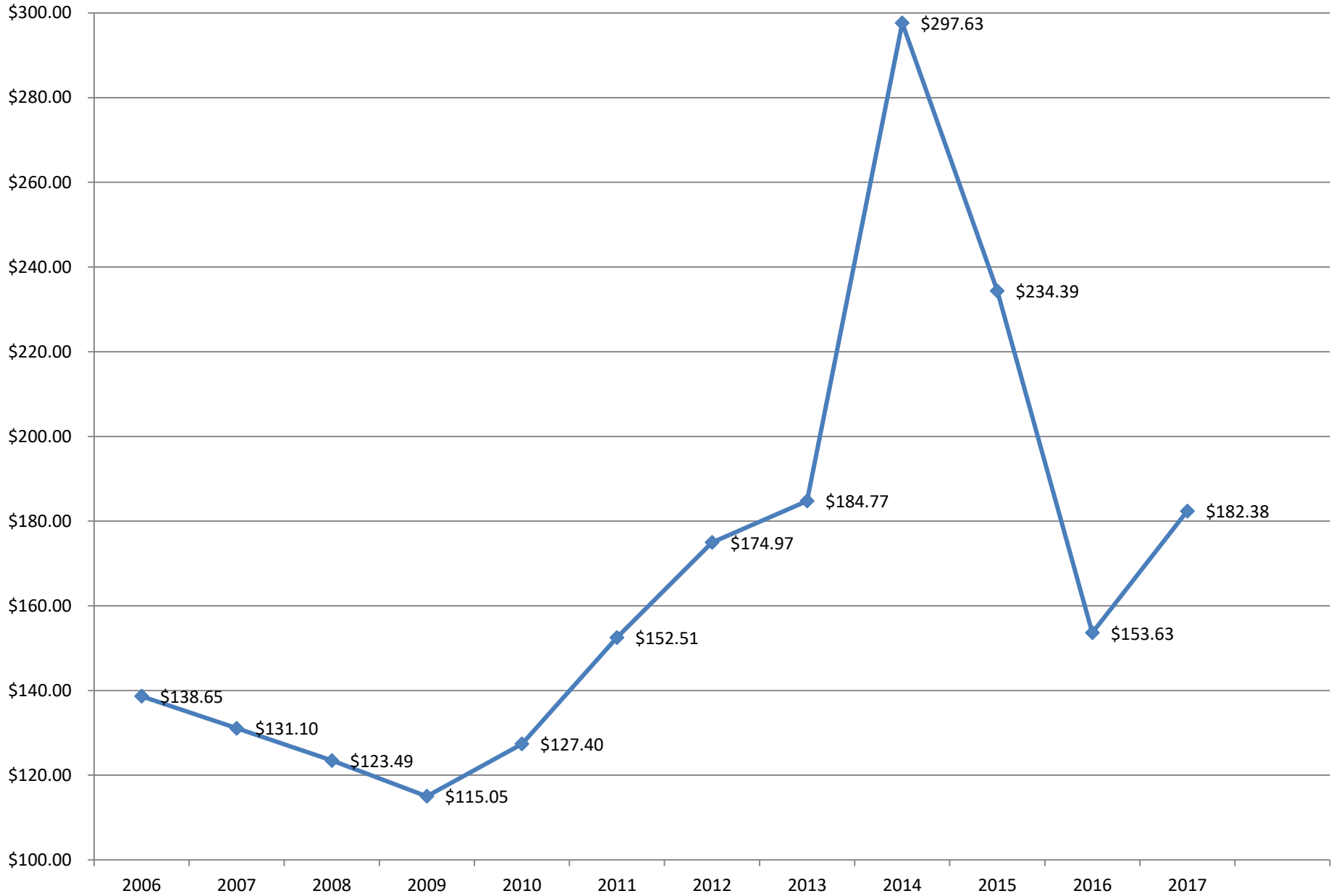
2016 OFFENDER HOURS



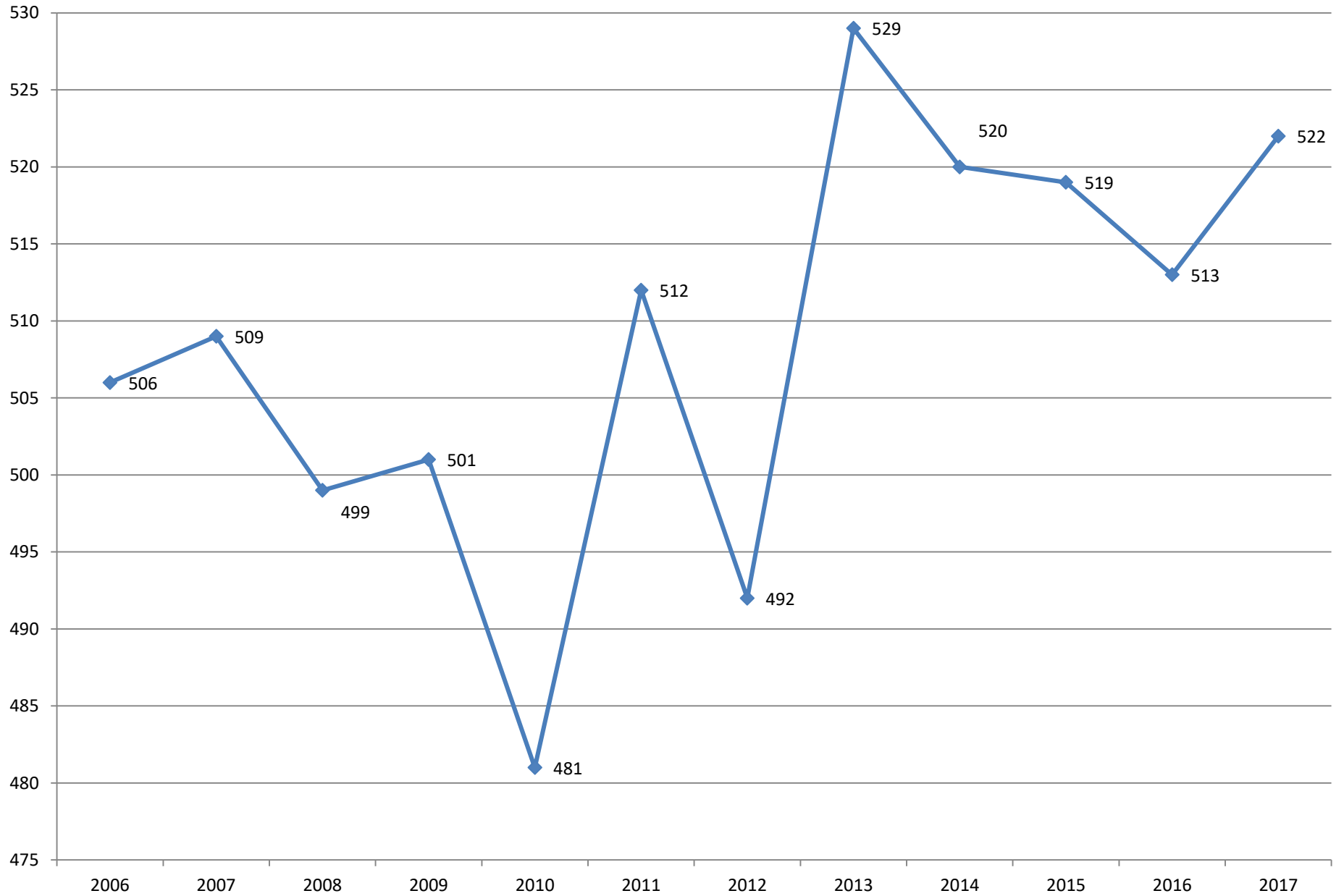
Offender Hours 2006 - 2016



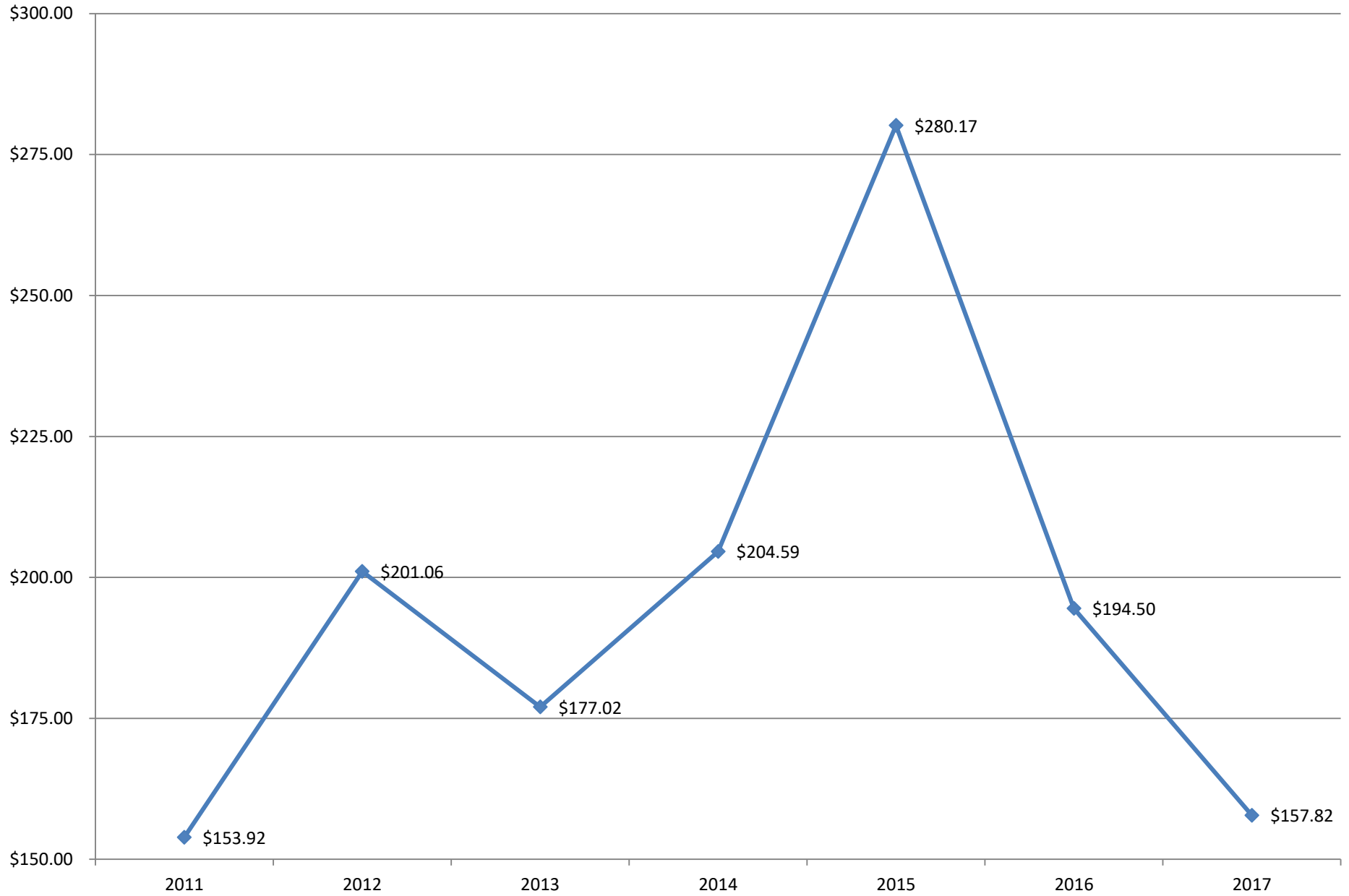
Anamosa and Newton Average CTW 2006 - 2017



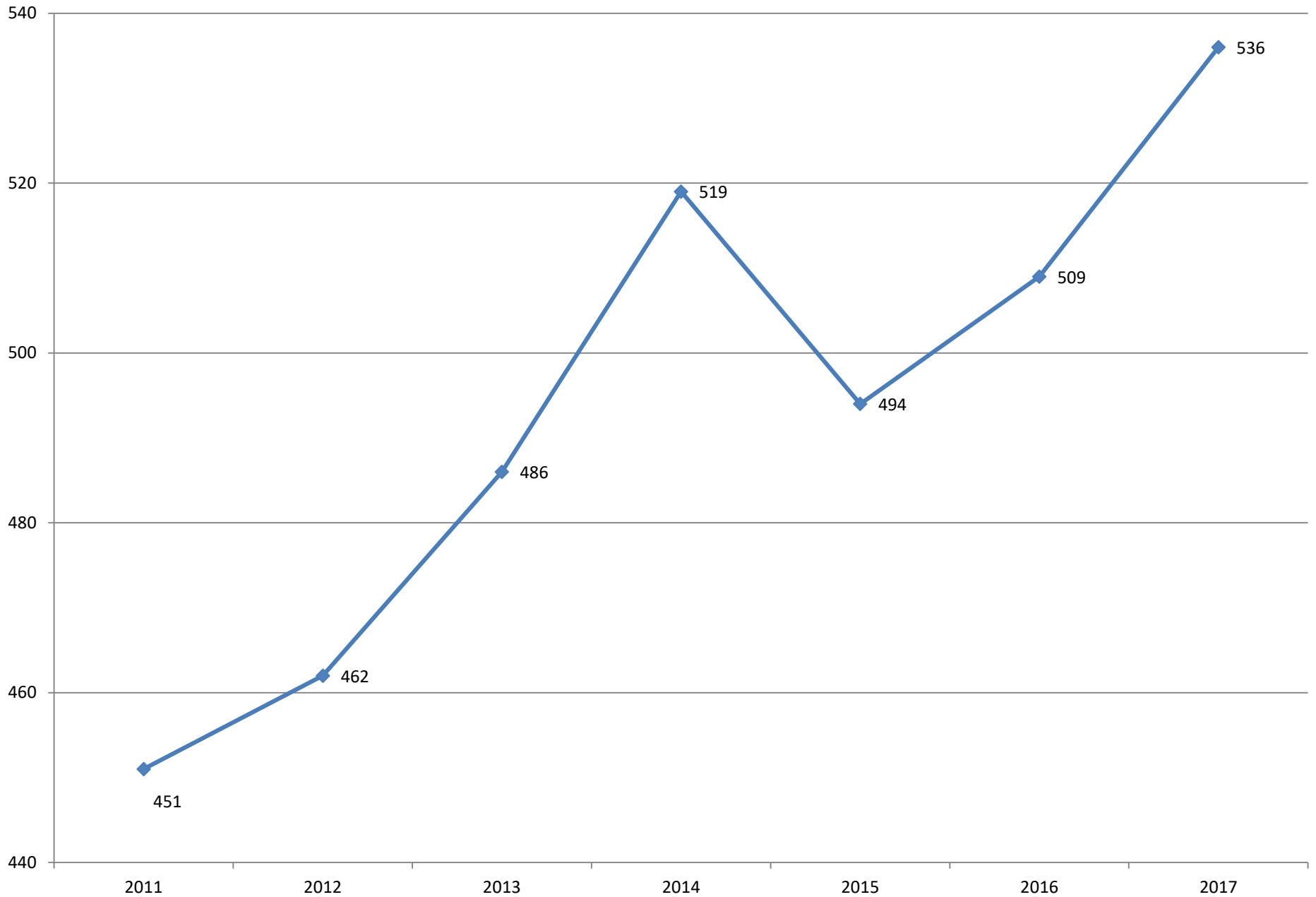
Anamosa and Newton Average Weights 2006 - 2017



Ft Madison Calf Average CTW 2011 - 2017



Ft Madison Calf Average Weights 2011 - 2017



Nutrient Management Practices

- Cover Crop
- Waterways- add and repair existing
- Switched to no-till farming
- Continuing
 - Use of buffers
 - Crop rotation
 - Soil testing
 - Nitrogen Inhibitor