

Iowa Prison Industries Customer Ordering Guide: Cabinets and Millwork



IPI 2014

Iowa Prison Industries

Iowa Prison Industries (IPI) provides inmates with meaningful work experience and the opportunity to develop valuable skills. As part of the Iowa Department of Corrections, IPI operates manufacturing facilities, farms, and private sector partnerships at eight of Iowa's state prisons.

Iowa Prison Industries receives no appropriation and is 100% self funding. In fact, since 1999, Iowa Prison Industries has returned over \$10 million to Iowa's General Fund and state institutions. Millions more are returned to society in the way of child and family support, victim restitution, income taxes, and inmate savings plans.

Numerous studies have shown that inmates with correctional industries experience have notably lower rates of recidivism. Their ability to find meaningful jobs, along with the values developed working in correctional industries, helps them become productive, law-abiding citizens. These offenders obtain better paying jobs, find work more quickly, and retain jobs longer than inmates without this experience.

Your purchase from Iowa Prison Industries give offenders the opportunity to learn new skills, develop the pride of craftsmanship, and experience the inherent dignity of work.

MISSION STATEMENT



To employ staff and inmates who are dedicated to providing:

Exceptional Service

Reasonable Prices

Quality Products

It is this commitment to excellence that will allow our business to remain self-funding, achieve growth, provide more jobs for inmates and staff and assume a national leadership role in correctional industries.

Vision

By ensuring our mission is achieved, we will have assisted the Department of Corrections in protecting the public, staff, and inmate safety through vital work programs that will ensure the offenders' chances of a successful return to society as tax-paying citizens upon their release.

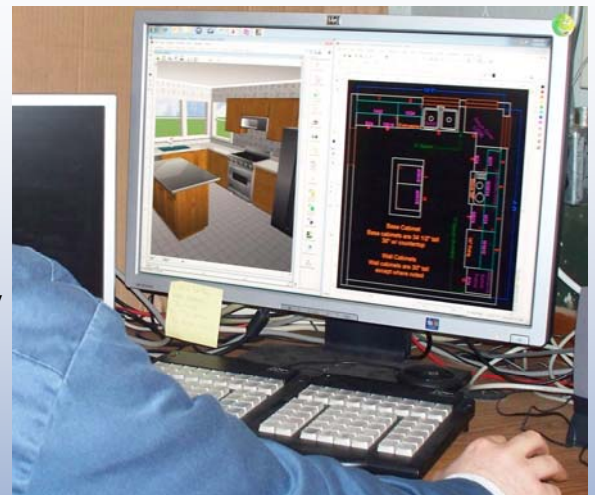
IPI at Fort Madison

IPI at Fort Madison has many years experience in designing and building custom cabinets.

Using advanced skills in Computer Assisted Drafting (CAD), woodworking and finishing, offenders can design and build whatever your needs may be for your project.



Cabinets can be built to fit any need, from kitchen and baths to office setting and schools. The Fort Madison operation can also provide matching millwork, as well as coordinating accent furniture such as entertainment centers, kitchen islands, and china cabinets. All are handcrafted to the same high standards, and built to last for generations.



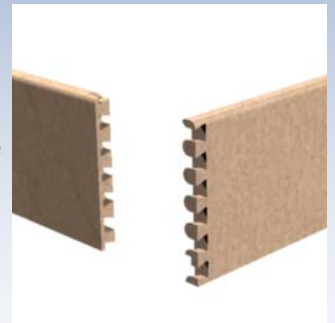
Cabinetry

Cabinets are custom designed and handcrafted by IPI's skilled woodworkers. Face framed in solid hardwood, these cabinets utilize Tongue-and-Groove joints throughout for added strength, and interiors constructed from architectural grade super-ply Baltic Birch. Cover Panels are applied to all exterior sides that are visible. Cabinets are available in both flat and raised panel styles.

Drawers features dovetail joinery in both front and back, providing greater strength and durability. Made using the same architectural grade Baltic Birch, the drawers move on high quality glides for a smooth and quiet operation. Full extension glides are also available.

These cabinets are easy to clean and maintain, with a multi-coat sealer system that provides a durable waterproof finish. There are many finish colors available. European style concealed hinges provide a modern look, and allow tool-free installation and removal of doors for easier maintenance.

Combining top quality materials, unmatched craftsmanship, and maintenance-free design, these cabinets will provide the new owner with cabinets that are both great looking and long lasting!



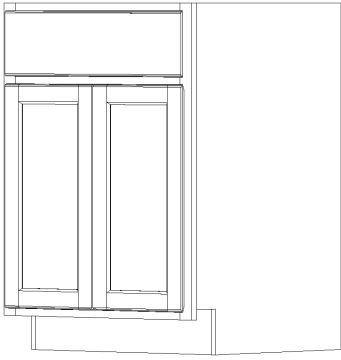
Dovetailed drawer construction



Flat Panel Doors

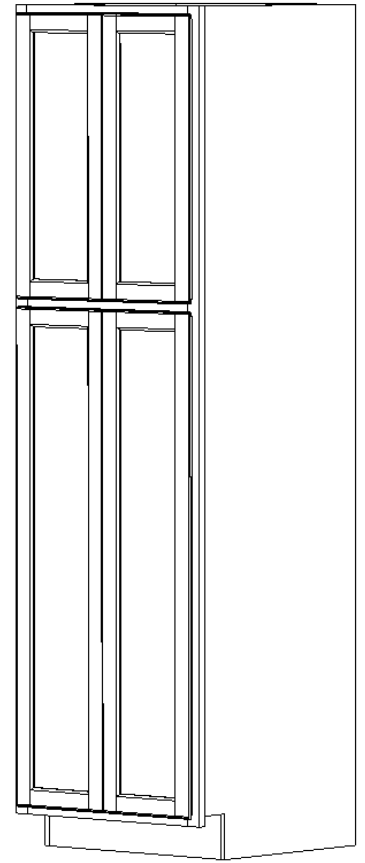
Raised Panel Doors





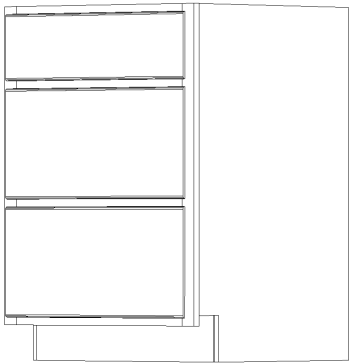
Base Cabinets

come in many sizes
Standard height & depths are 34 1/2" x 24"



Pantry and Linen Closets

Comes with 1 Adjustable Shelf In the
Upper Area and 3 in the Lower Area

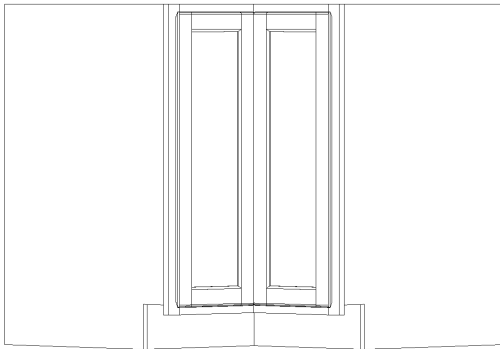


Drawer Bases

Standard 3 drawers,
4 drawers also available
or whatever you need

Samples of Cabinets:

We are a custom cabinet shop,
we can build whatever you need.

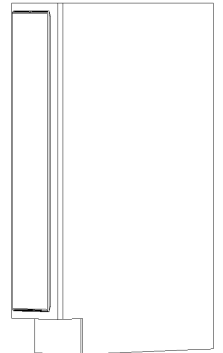


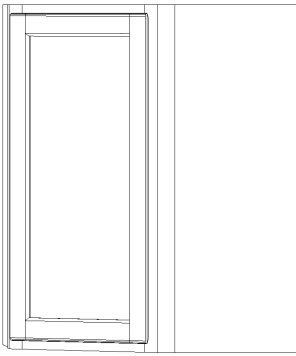
LS36
36" Lazy Susan with
2 adjustable shelves

End Caps

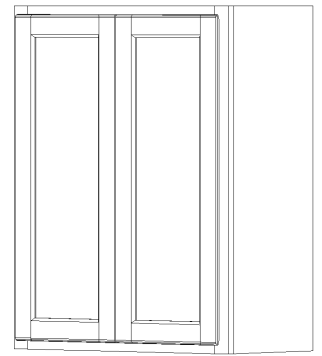
End Caps come in a variety
of size and styles to meet your needs.

Sample shown is:
6" End Cap w/ False Door

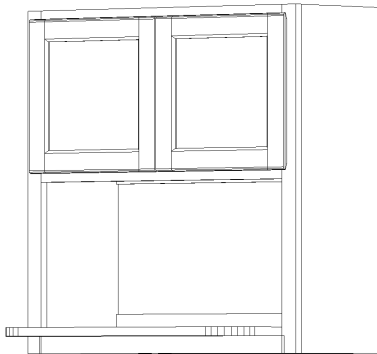




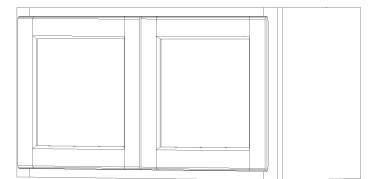
CW24
(2 Fixed shelves)
Corner Wall 24 x 30



Wall Cabinets
come in many sizes to
meet your needs.
(2 adjustable Shelves)



Microwave Cabinets
Customizable to your needs



Short Wall Cabinets
Come in many heights & lengths
To fit above sinks, stoves and refrigerators

Vanities have several styles and sizes to meet your needs.

Here are a few samples, but there are many to choose from
or we can design one just for you!

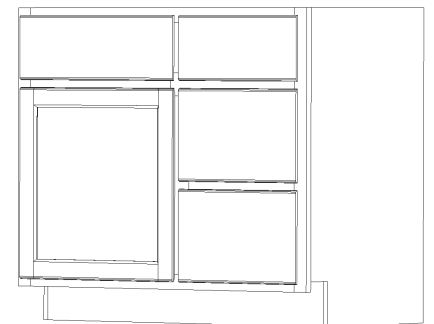
Standard height & depths are:

31 1/2" x 21".



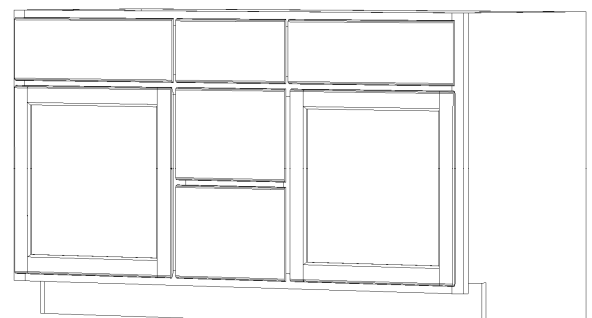
V24

V36



V48

V60
Double Sink



Millwork



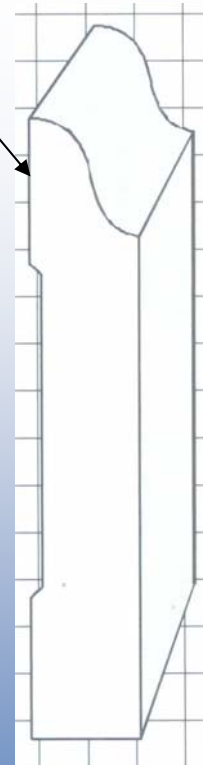
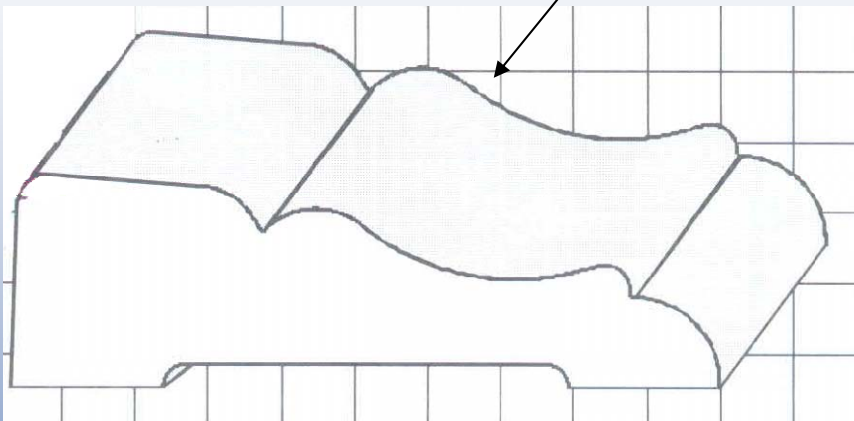
Case, Base, Crown Molding, Quarter Round and other trim can be manufactured and finished to match your cabinets. This trim work is made of poplar or solid hardwood, your choice, and finished with the same stain and sealer process as the cabinets.



Base Moulding

Samples

Case Moulding



Standard Case: 2 1/2"
Standard Base: 3 1/4"

Custom Furniture to Match Your Woodwork and Cabinetry

Custom furniture can be made to match your cabinet and millwork finish. These pieces are made to the same exacting standards as our cabinets and are built to last a lifetime! If you want something out of wood to match, ask us and we can do it!



Custom China Hutch



Inside View of
Entertainment Center



Custom Entertainment Center

Delivery Fleet

Iowa Prison Industries has its own fleet of trucks, equipped with lift gates and protective dunnage. Our team will work with you to schedule and arrange a delivery that meets your needs.



HOW TO ORDER

It's easy—just contact Iowa Prison Industries, and we will coordinate the design and production of your cabinetry, millwork and any accompanying pieces such as kitchen islands or entertainment centers.

Here's how:

1. Contact IPI with your initial plans 12 weeks before your desired delivery date. (If you don't have 12 weeks, give us a call and we will find a way to help you.)
2. Send us your plans for the areas in need of cabinetry. Use the blueprint for the building or other documents showing the overall dimensions of the area, and the location of any doors or windows.
3. The IPI Design Team will review your plans, or even design one for you!
4. When the initial design is ready, IPI will review it with you, and address any questions or concerns. Options such as finish, drawer glides and cabinet styles can be selected, as well as any matching millwork or furniture.
5. Once the design and options are finalized and approved by you, IPI will calculate the cost, schedule the production, and arrange for delivery.
6. Relax. We've designed and built cabinets for affiliates hundreds of times.
7. Call or email us anytime.



Iowa Prison Industries

1st and Avenue E

Fort Madison, IA 52627

319.372.1908

1.800.382.0019

Fax: 319.372.2856

Email: laura.mendez@iowa.gov

